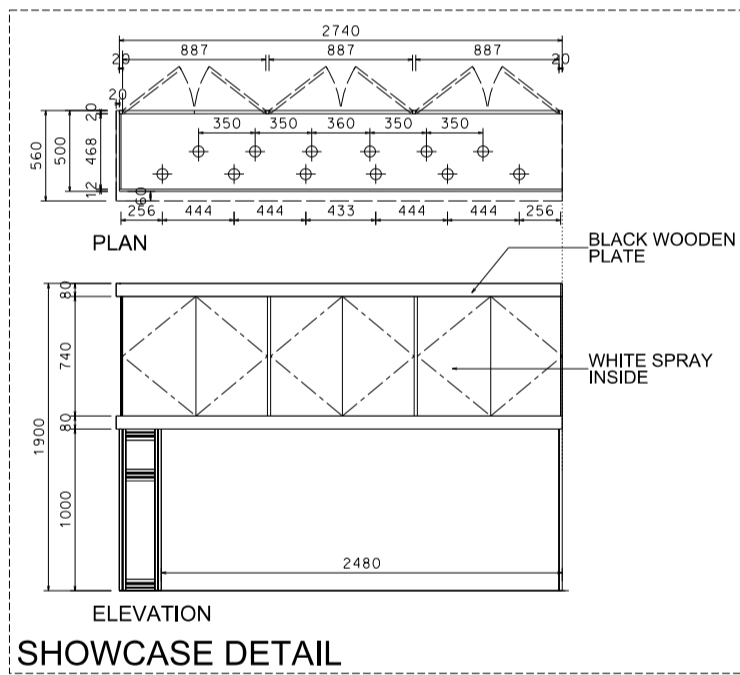
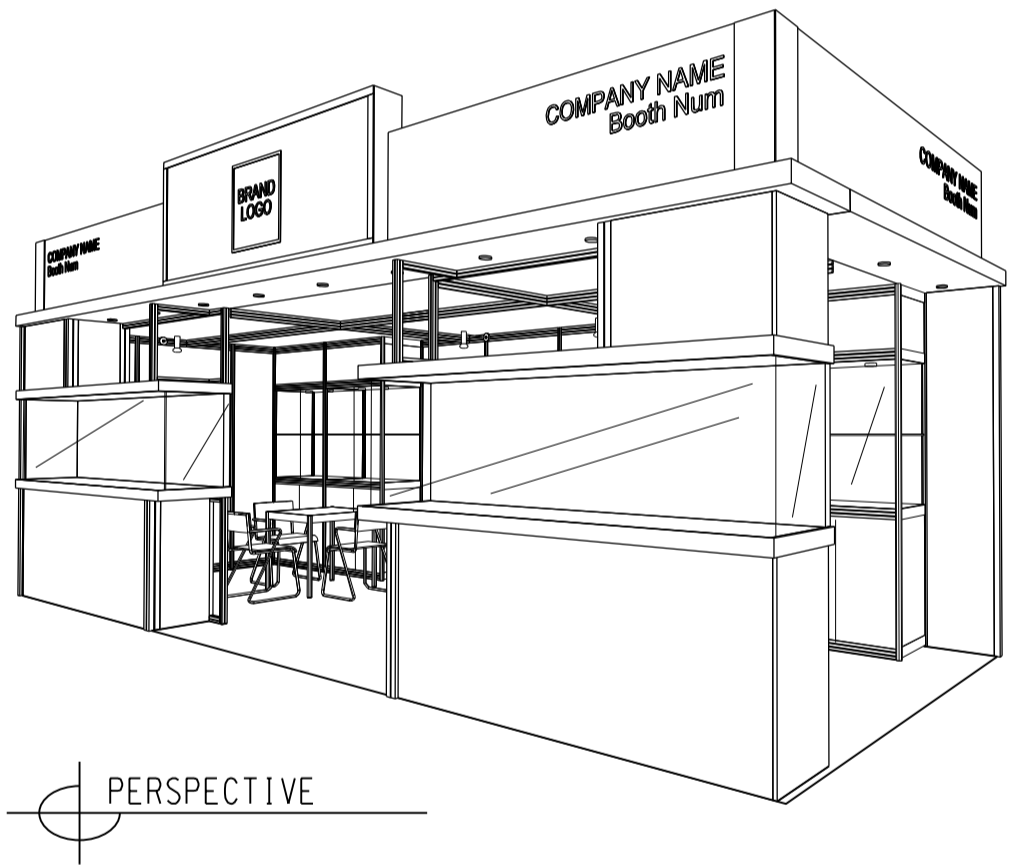
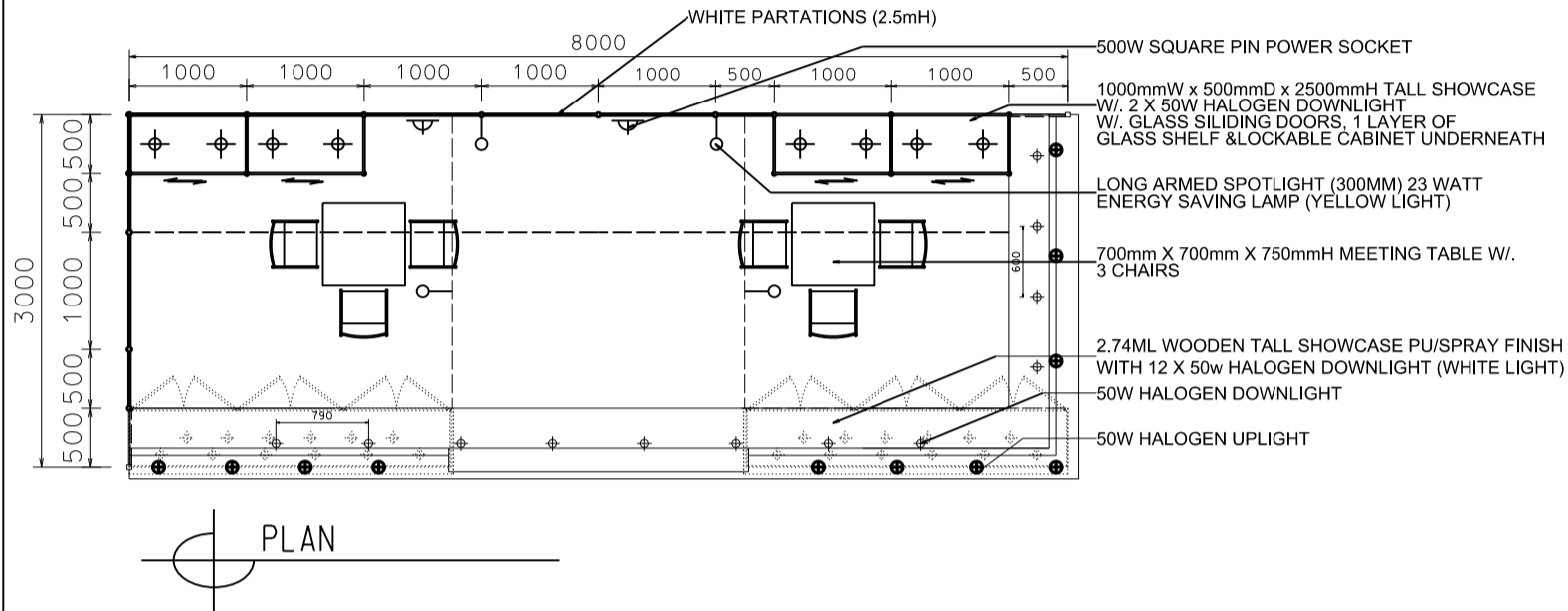
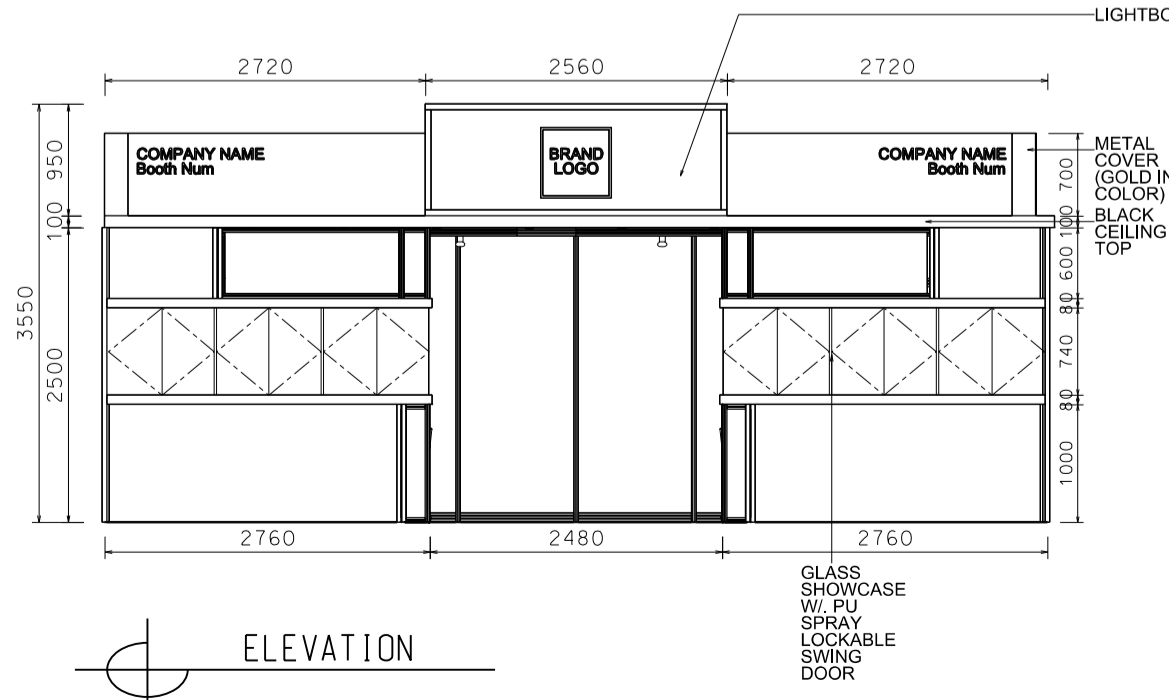


8M(W) x 3M(D) Deluxe Booth- Salon de TE (Right Corner)

8米(闊) x 3米(深) 國際名表薈萃高級攤位 (右邊角位)



BOOTH SPECIFICATIONS		QTY.
	2740mmW x 500mmD x 740mmH (INTERNAL SIZE 2700W X 468D X 740H) FRONT TALL SHOWCASE W/ 12 X 50W EYEBALL HALOGEN DOWNLIGHT & 3 X WHITE SWING DOORS & LOCKABLE CABINET UNDERNEATH	2
	1000mmW x 500mmD x 2500mmH TALL SHOWCASE W/ 2 X 50W HALOGEN DOWNLIGHT, W/ GLASS SILIDING DOOR & 1 LAYER OF GLASS SHELF, CABINET UNDERNEATH	4
	LONG ARMED SPOTLIGHT (300MM) 23 WATT ENERGY SAVING LAMP (YELLOW LIGHT)	4
	50W HALOGEN UPLIGHT (FOR FASCIA)	11
	50W HALOGEN DOWNLIGHT (FOR ENTRANCE)	12
	500w SQUARE PIN POWER SOCKET (FOR ONE APPLIANCE USE ONLY, NOT PERMITTED FOR LIGHTING CONNECTION)	2
	700mmW x 700mmD x 750mmH MEETING TABLE	2
	BLACK LEATHER CHAIR	6
	CEILING BEAM	12.5M
	STICKER CUT OUT COMPANY NAME & LOGO	1
	RUBBISH BIN	2
	CARPET	24SQM



*The Hong Kong Trade Development Council reserves the right to change the configuration if necessary.