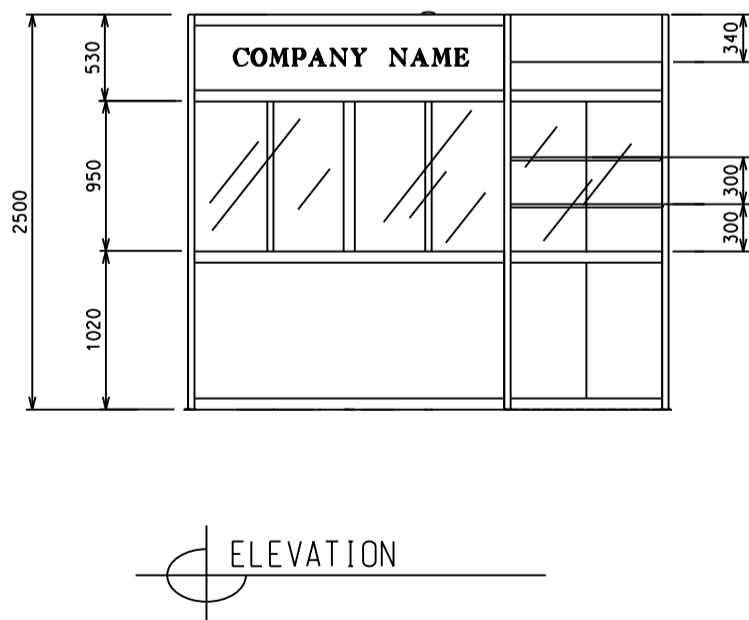
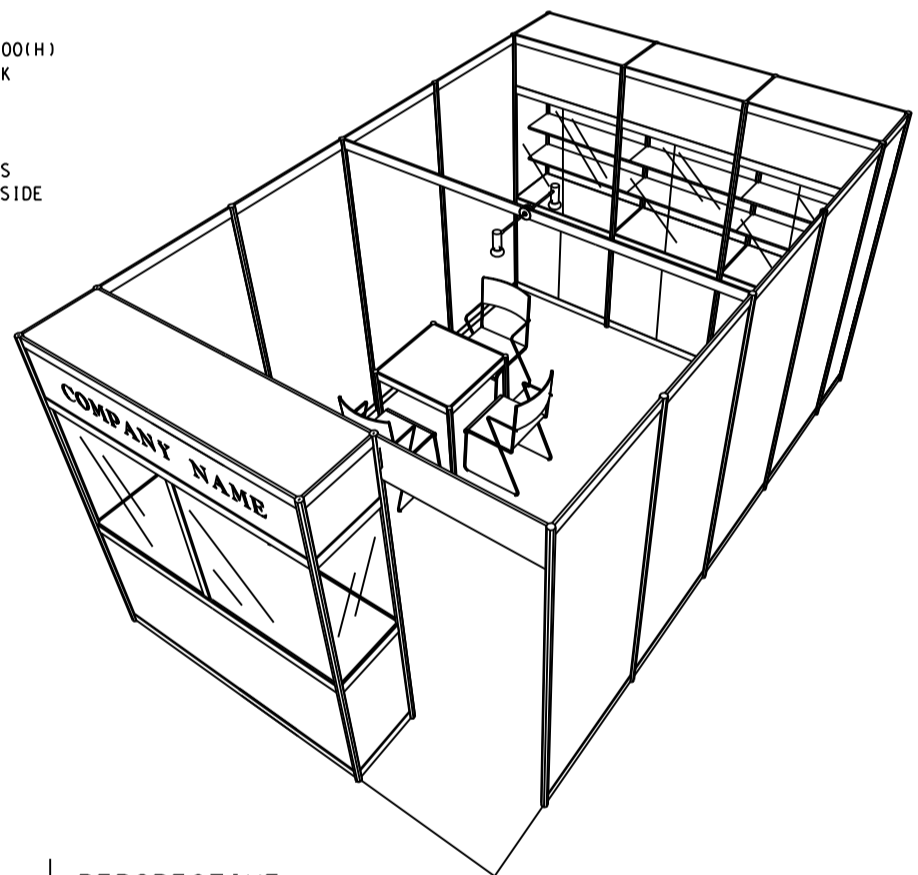
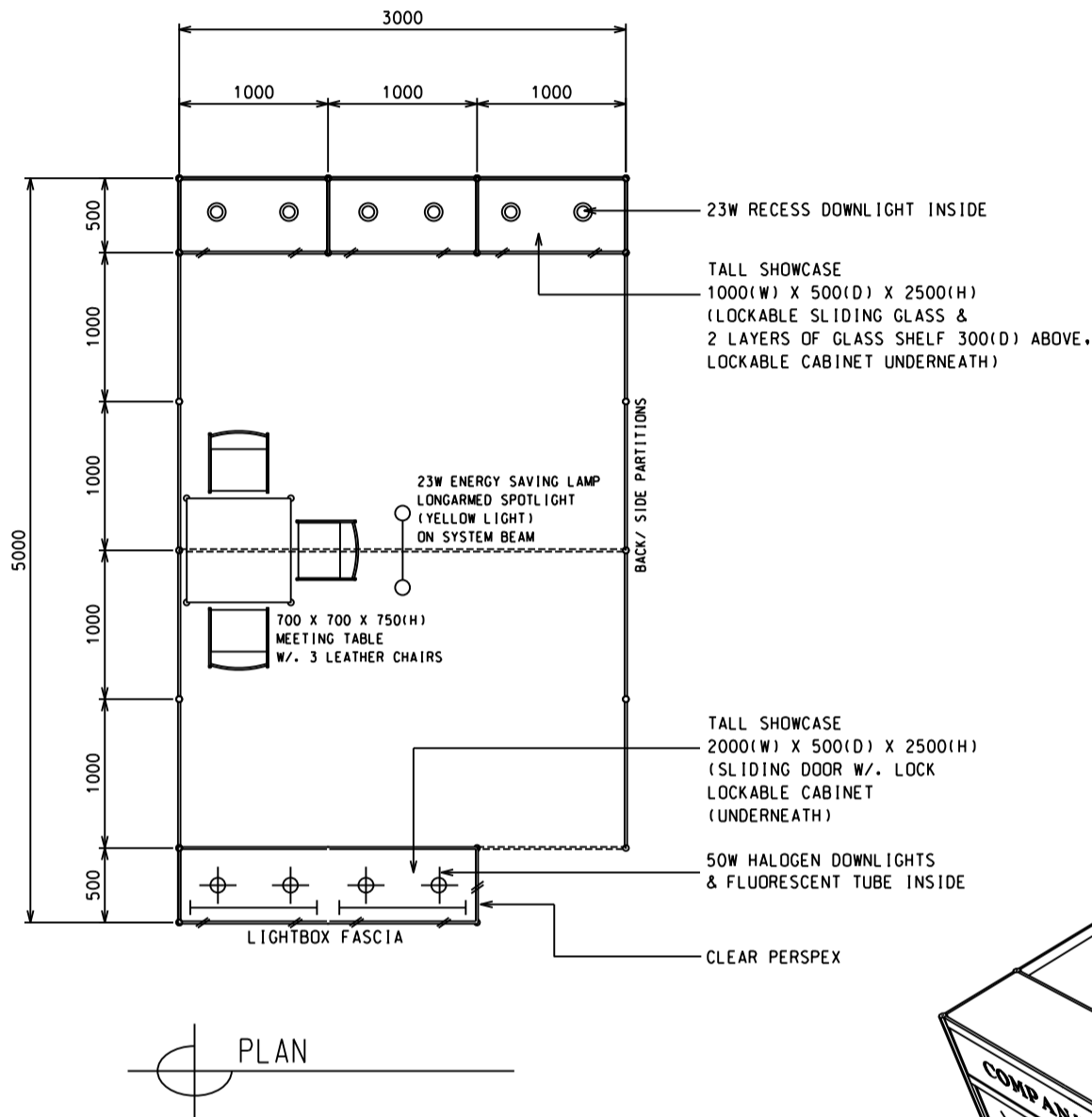


3M(W) x 5M(D) Standard Booth

三米乘五米標準攤位



| BOOTH SPECIFICATIONS | | QTY. |
|----------------------|--|------|
| | 2000L TALL SHOWCASE W/. 4 X 50W HALOGEN DOWNLIGHT & FLUORECENT TUBE INSIDE | 1 |
| | 1000L TALL SHOWCASE W/. 2 X 23W RECESS DOWNLIGHT | 3 |
| | 700mmL X700mmW X 750mmH MEETING TABLE | 1 |
| | BLACK LEATHER CHAIR | 3 |
| | 23W ENERGY SAVING LAMP LONGARMED SPOTLIGHT (YELLOW LIGHT) | 2 |
| | FLUORESCENT TUBE | 2 |
| | CEILING BEAM | 3M |
| | RUBBISH BIN & CARPET (15sqm.) | |