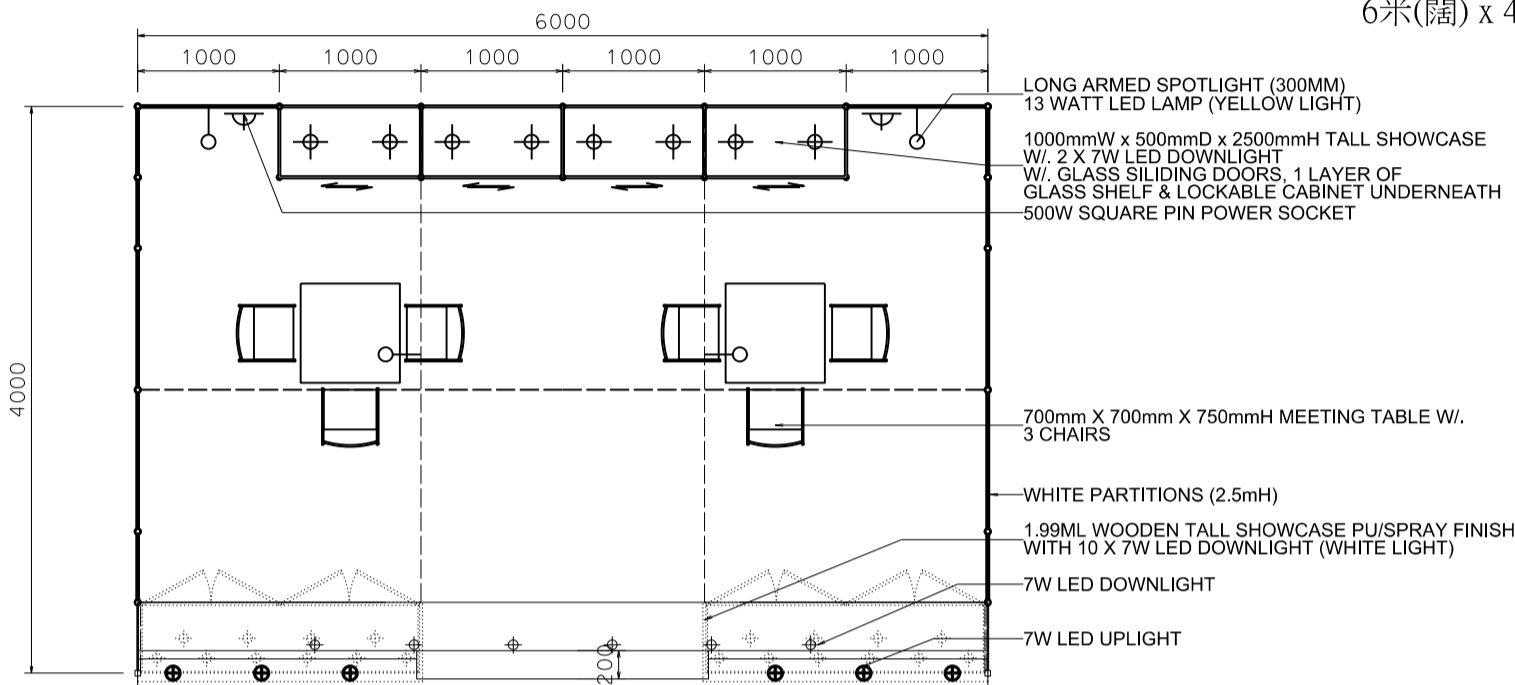
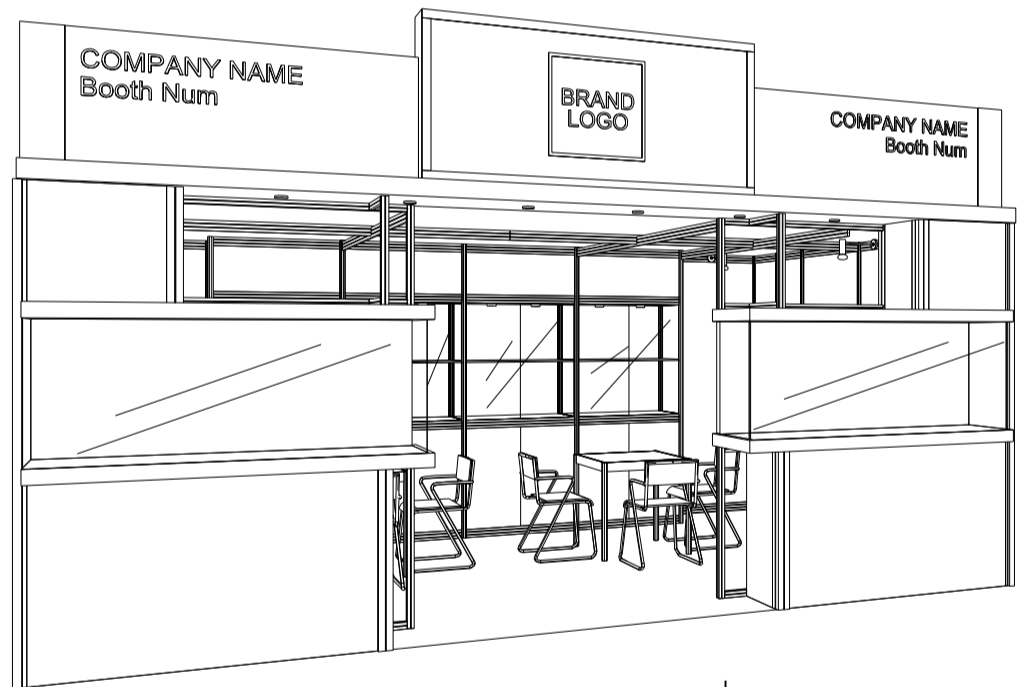
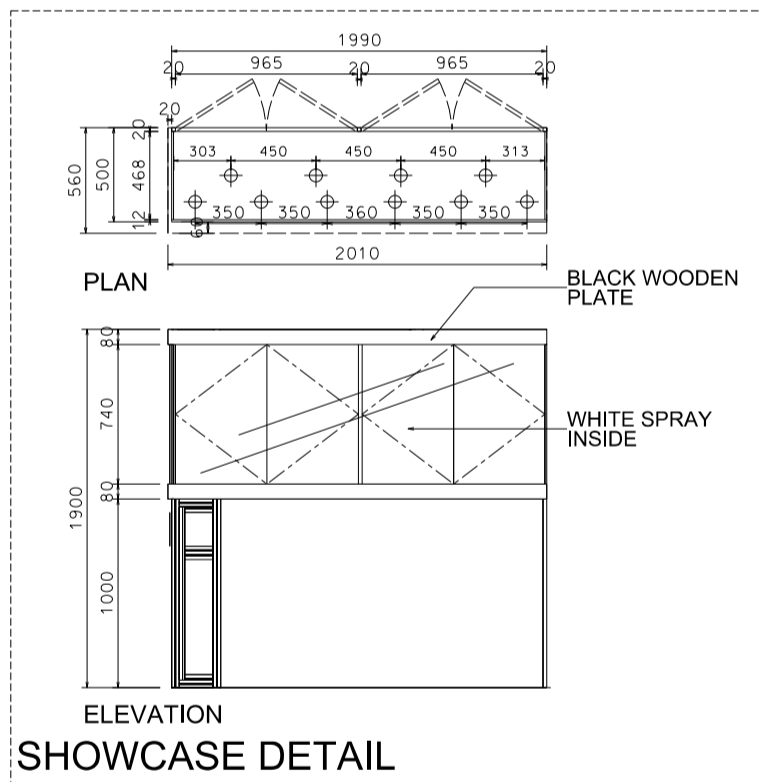


### 6M(W) x 4M(D) Deluxe Booth-Salon de TE

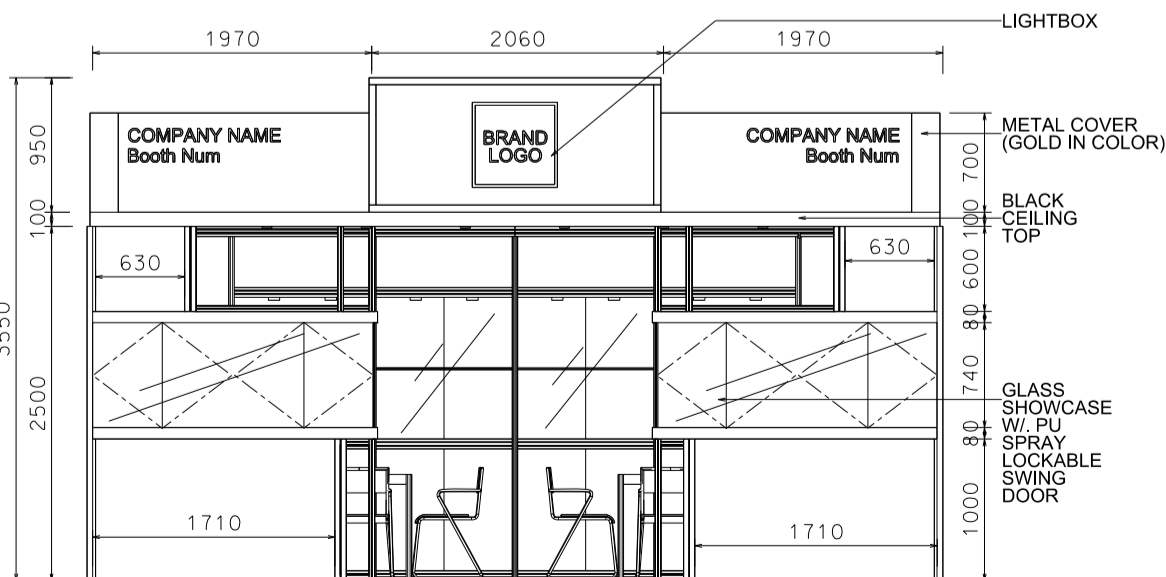
6米(闊) x 4米(深) 國際名表薈萃高級攤位



PLAN



PERSPECTIVE



ELEVATION

BOOTH SPECIFICATIONS		QTY.
	1990mmW x 500mmD x 740mmH (INTERNAL SIZE 1950W X468D X 740H) FRONT TALL SHOWCASE W/ 10 X 7W LED DOWNLIGHT & 2 X WHITE SWING DOORS & LOCKABLE CABINET UNDERNEATH 1990mm(闊) x 500mm(深) x 740mm(高) (內部的尺寸:1950mm(闊) x 468mm(深) x 740mm(高)) 門前高身飾櫃連10 X 7W LED可調角度筒燈及2 x 白色木掩門, 連有鎖地櫃	2
	1000mmW x 500mmD x 2500mmH TALL SHOWCASE W/ 2 X 7W LED DOWNLIGHT W/ GLASS SILIDING DOOR & 1 LAYER OF GLASS SHELF, CABINET UNDERNEATH 1000mm(闊) x 500mm(深) x 2500mm(高) 高身飾櫃連2 x 7W LED筒燈連1層玻璃層板及玻璃掩門, 連有鎖地櫃	4
	LONG ARMED SPOTLIGHT (300MM) 13 WATT LED LAMP (YELLOW LIGHT)	4
	7W LED UPLIGHT (FOR FASCIA)	6
	7W LED DOWNLIGHT (FOR ENTRANCE)	6
	500w SQUARE PIN POWER SOCKET (FOR ONE APPLIANCE USE ONLY, NOT PERMITTED FOR LIGHTING CONNECTION) 只供一件電器用之500瓦特電源方插插座(220伏特)(不可用於照明裝置)	2
	700mmW x 700mmD x 750mmH MEETING TABLE 正方檯 (0.7米長x0.7米闊x0.75米高)	2
	BLACK LEATHER CHAIR 黑色皮椅	6
	CEILING BEAM 天花橫樑	12M
	STICKER CUT OUT COMPANY NAME & LOGO 公司名稱及商標	1
	RUBBISH BIN 廢紙箱	2
	CARPET 地毯	24sqm

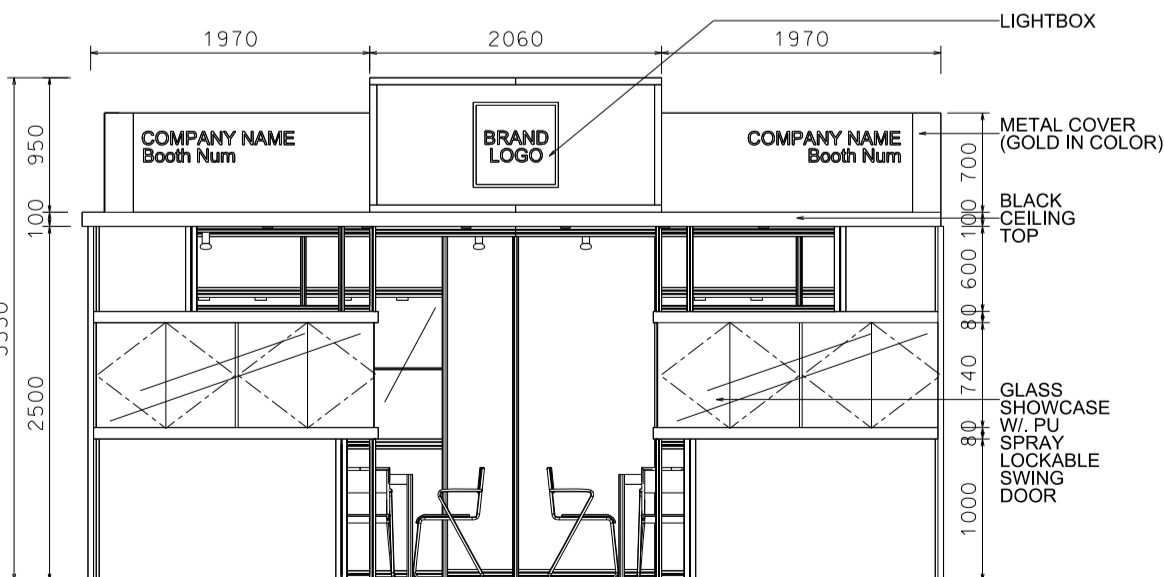
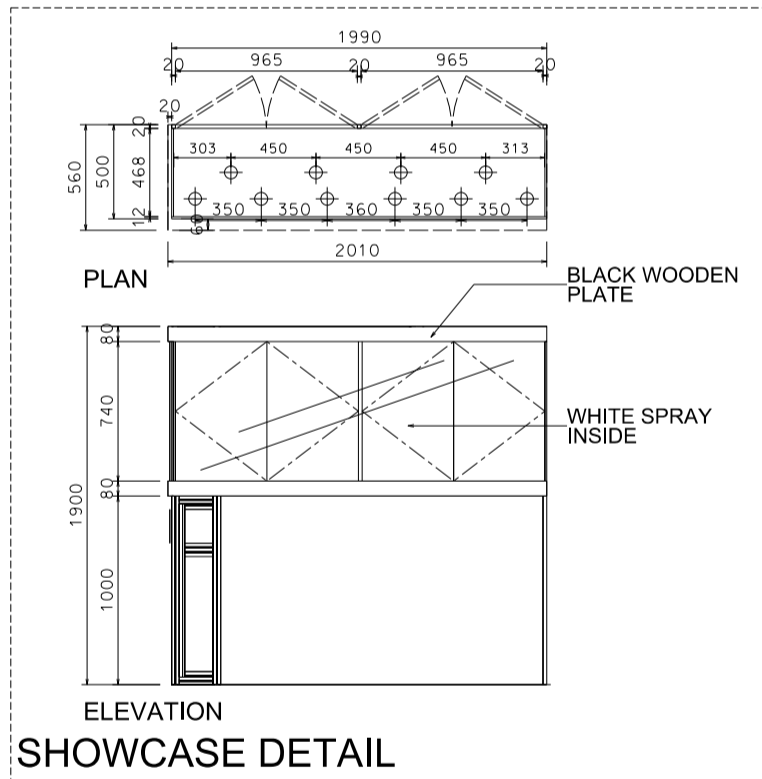
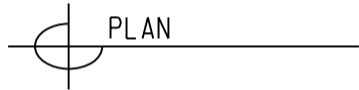
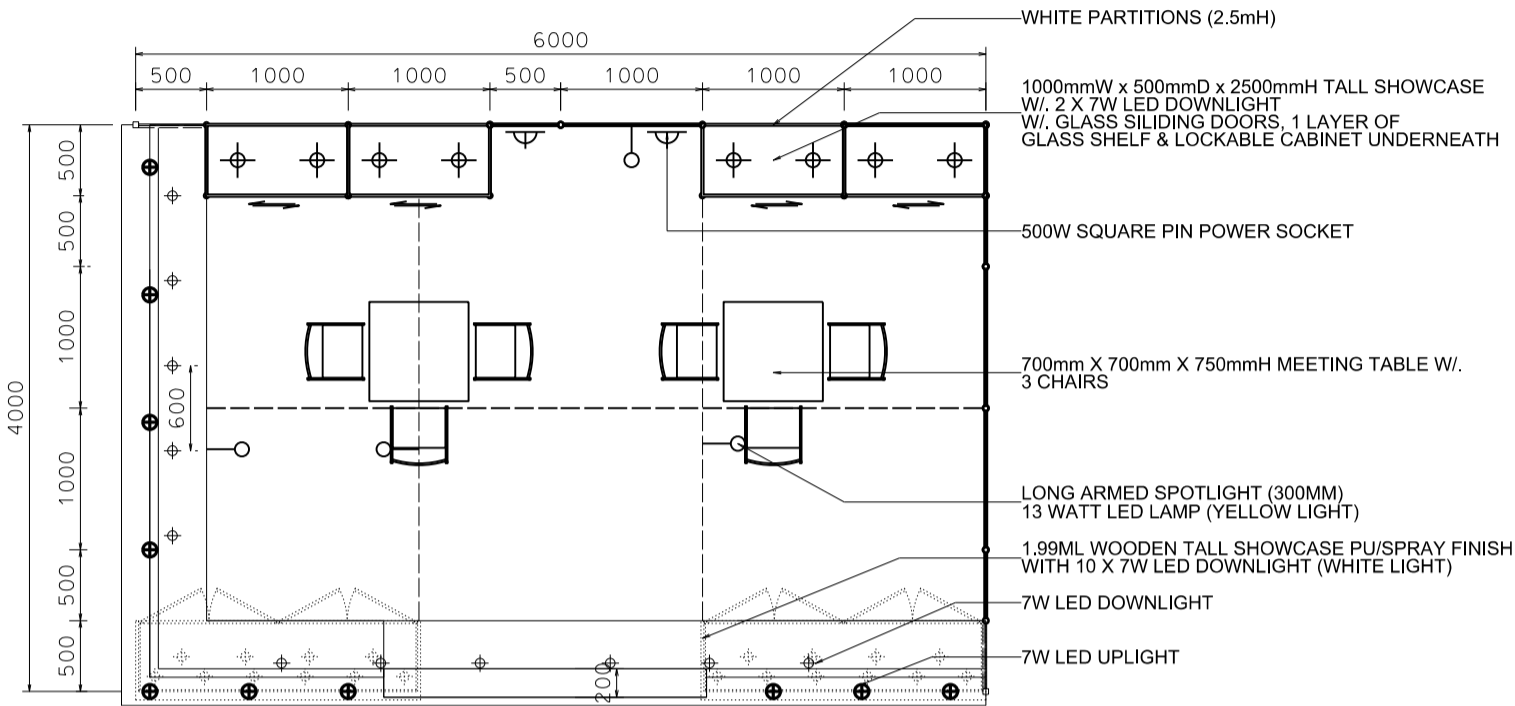
\*The Hong Kong Trade Development Council reserves the right to change the configuration if necessary.

# Hong Kong Watch & Clock Fair

## 香港鐘表展

### 6M(W) x 4M(D) Deluxe Booth-Salon de TE (Left Corner)

6米(闊) x 4米(深) 國際名表薈萃高級攤位 (左邊角位)

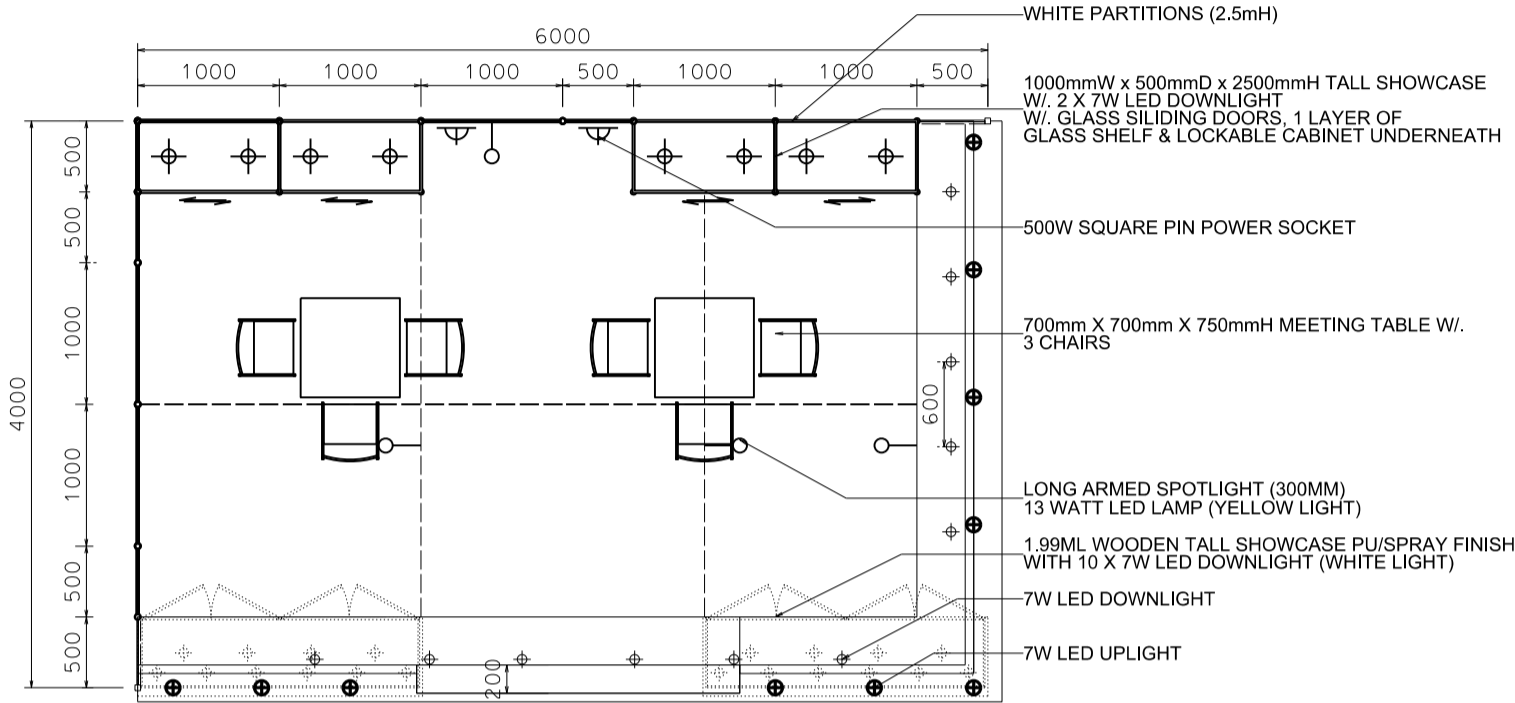


BOOTH SPECIFICATIONS		QTY.
	1990mmW X 500mmD X 740mmH (INTERNAL SIZE 1950W X468D X 740H) FRONT TALL SHOWCASE W/ 10 X 7W LED DOWNLIGHT & 2 X WHITE SWING DOORS & LOCKABLE CABINET UNDERNEATH 1990mm(闊) x 500mm(深) x 740mm(高) (內部的尺寸:1950mm(闊) x 468mm(深) x 740mm(高)) 門前高身飾櫃連10 X 7W LED可調角度筒燈及2 x 白色木掩門, 連有鎖地櫃	2
	1000mmW x 500mmD x 2500mmH TALL SHOWCASE W/ 2 X 7W LED DOWNLIGHT W/ GLASS SLIDING DOOR & 1 LAYER OF GLASS SHELF, CABINET UNDERNEATH 1000mm(闊) x 500mm(深) x 2500mm(高) 高身飾櫃連2 x 7W LED筒燈連1層玻璃層板及玻璃趟門, 連有鎖地櫃	4
	LONG ARMED SPOTLIGHT (300MM) 13 WATT LED LAMP (YELLOW LIGHT) 13瓦特LED燈筒長臂射燈(約長300mm)(黃光)	4
	7W LED UPLIGHT (FOR FASCIA) 7瓦LED燈 (射招牌用)	10
	7W LED DOWNLIGHT (FOR ENTRANCE) 7瓦LED燈 (門口用)	11
	500w SQUARE PIN POWER SOCKET (FOR ONE APPLIANCE USE ONLY, NOT PERMITTED FOR LIGHTING CONNECTION) 只供一件電器用之500瓦特電源方插插座(220伏特)(不可用於照明裝置)	2
	700mmW x 700mmD x 750mmH MEETING TABLE 正方檯 (0.7米長x0.7米闊x0.75米高)	2
	BLACK LEATHER CHAIR 黑色皮椅	6
	CEILING BEAM 天花橫樑	11.5M
	STICKER CUT OUT COMPANY NAME & LOGO 公司名稱及商標	1
	RUBBISH BIN 廢紙箱	2
	CARPET 地毯	24sqm

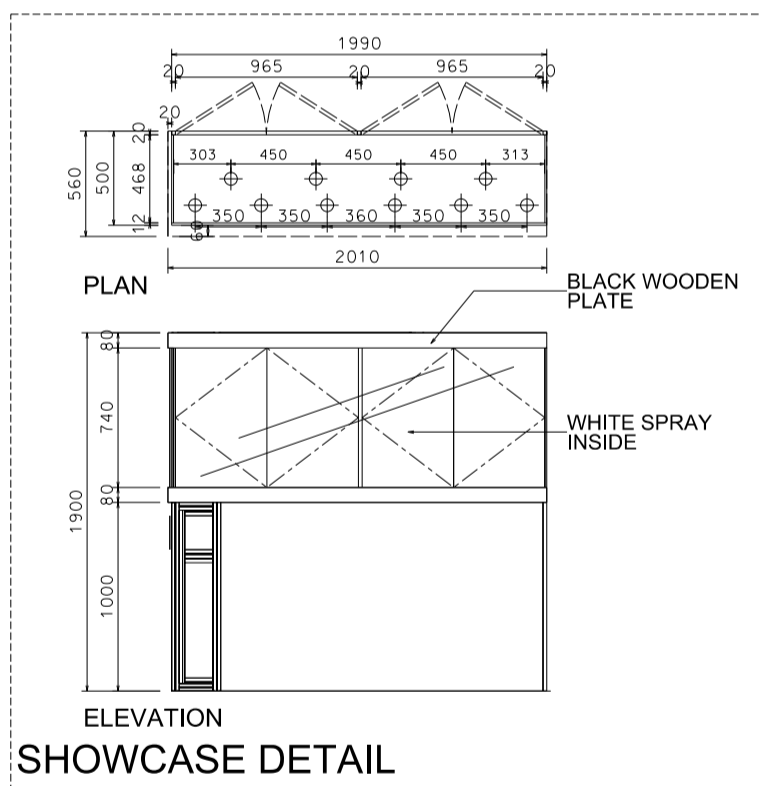
\*The Hong Kong Trade Development Council reserves the right to change the configuration if necessary.

### 6M(W) x 4M(D) Deluxe Booth- Salon de TE (Right Corner)

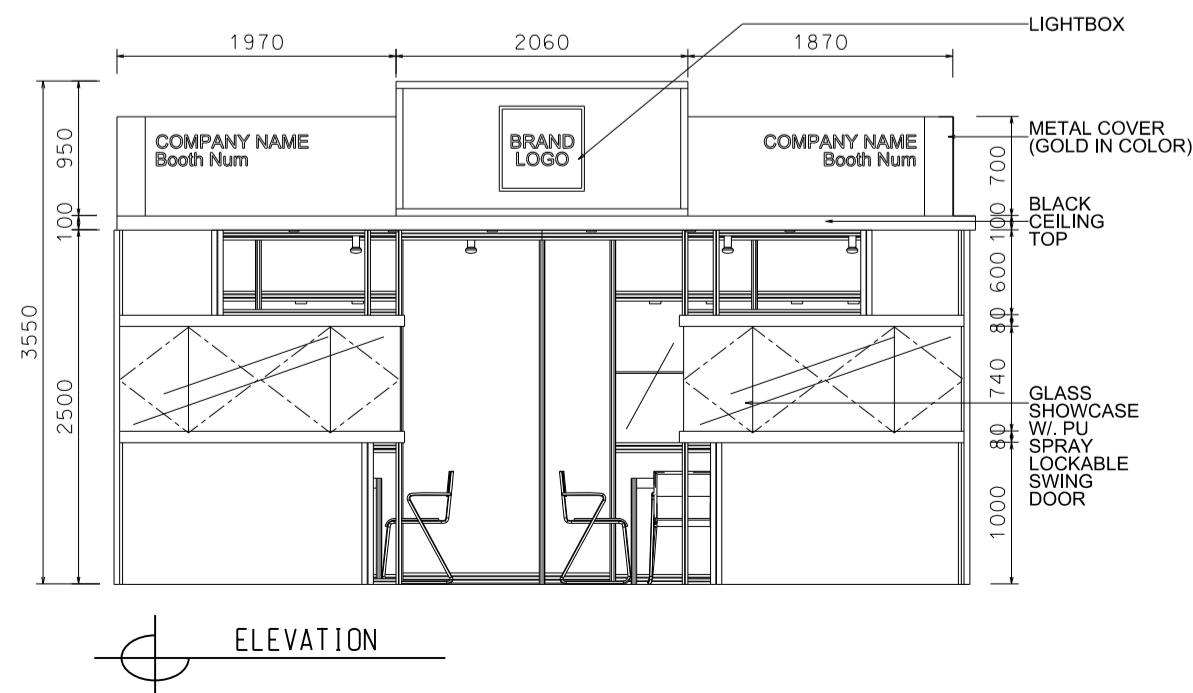
6米(闊) x 4米(深) 國際名表薈萃高級攤位 (右邊角位)



PLAN



PERSPECTIVE



BOOTH SPECIFICATIONS		QTY.
	1990mmW X 500mmD X 740mmH (INTERNAL SIZE 1950W X468D X 740H) FRONT TALL SHOWCASE W/ 10 X 7W LED DOWNLIGHT & 2 X WHITE SWING DOORS & LOCKABLE CABINET UNDERNEATH 1990mm(闊) x 500mm(深) x 740mm(高) (內部的尺寸:1950mm(闊) x 468mm(深) x 740mm(高)) 門前高身飾櫃連10 X7瓦LED可調角度筒燈及2 x 白色木掩門, 連有鎖地盤	2
	1000mmW x 500mmD x 2500mmH TALL SHOWCASE W/ 2 X 7W LED DOWNLIGHT W/ GLASS SILIDING DOOR & 1 LAYER OF GLASS SHELF, CABINET UNDERNEATH 1000mm(闊) x 500mm(深) x 2500mm(高) 高身飾櫃連2 x 7瓦LED筒燈連1層玻璃層板及玻璃趟門, 連有鎖地盤	4
	LONG ARMED SPOTLIGHT (300MM) 13 WATT LED LAMP (YELLOW LIGHT) 13瓦特LED燈筒長臂射燈(約長300mm)(黃光)	4
	7W LED UPLIGHT (FOR FASCIA) 7瓦LED燈 (射招牌用)	10
	7W LED DOWNLIGHT (FOR ENTRANCE) 7瓦LED燈 (門口用)	11
	500w SQUARE PIN POWER SOCKET (FOR ONE APPLIANCE USE ONLY, NOT PERMITTED FOR LIGHTING CONNECTION) 只供一件電器用之500瓦特電壓方腳插座(220伏特)(不可用於照明裝置)	2
	700mmW x 700mmD x 750mmH MEETING TABLE 正方形 (0.7米長x0.7米闊x0.75米高)	2
	BLACK LEATHER CHAIR 黑色皮椅	6
	CEILING BEAM 天花橫樑	11.5M
	STICKER CUT OUT COMPANY NAME & LOGO 公司名稱及商標	1
	RUBBISH BIN 廢紙箱	2
	CARPET 地毯	24sqm

\*The Hong Kong Trade Development Council reserves the right to change the configuration if necessary.

\*如有需要, 香港貿易發展局有權更改攤位結構。