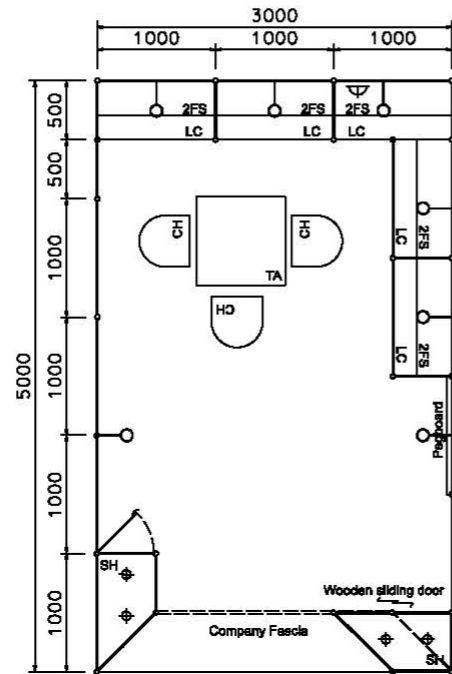
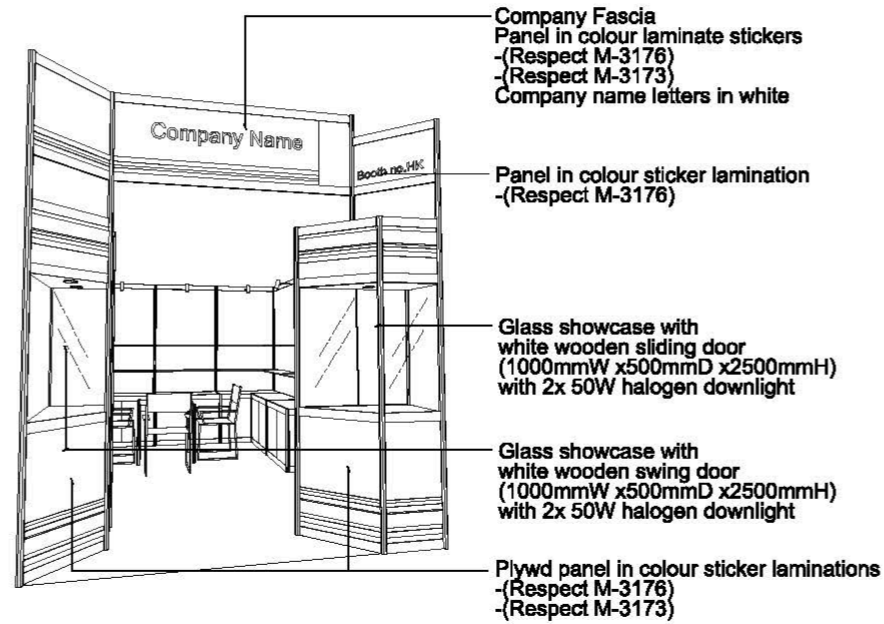


Premium Booth 3mW x 5mD One side open

WJ-A-15 - 3mW x 5mD x 3.5mH



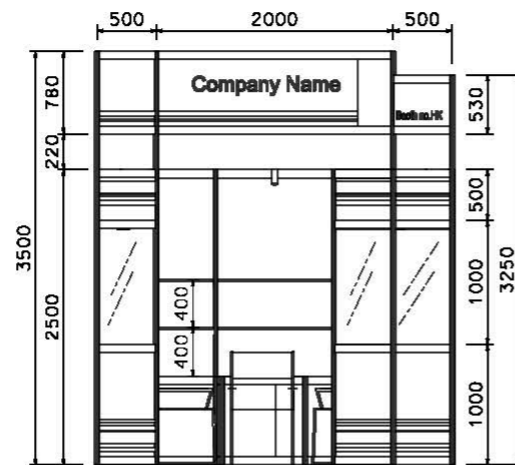
PLAN



PERSPECTIVE N.T.S.



COLOUR PERSPECTIVE N.T.S.



FRONT ELEVATION

BOOTH SPECIFICATION	QTY
Front glass showcase in sticker lamination with white wooden swing door. 2 x (50W) halogen downlight (1mW x 0.5mD x 2.5mH)	1
Front glass showcase in sticker lamination with white wooden sliding doors. 2 x (50W) halogen downlight (1mW x 0.5mD x 2.5mH)	1
Lockable cabinet (1mL x 0.5mD x 0.75mH)	5
Wooden shelf (flat) (1mL x 0.3mD)	10
Pegboard with 30 hooks (1mW x 2.5mH)	1
Square meeting table (0.7m X 0.7m x 0.75mH)	1
Black leather chair	3
Longarmed spotlight w/. 13W LED lamp (yellow)	7
500w Square pin power socket	1

FILE PATH - L:\Local Fair Premium Booth 2019\WJ-A-15\WJ-A-2dLayout.dgn



NOTES UNLESS OTHERWISE SPECIFIED ALL DIMENSIONS ARE IN MM.

.....

REVISION
 15-06-2009
 23-10-2009
 20-01-2010
 15-05-2015
 03-08-2019

DATE: 03-05-2019
SCALE: 1 : 50 (A3)
DRAWN BY: ..
CHECKED BY:

TITLE
 Premium Booth
 WJ-A-15

PROJECT
 PREMIUM BOOTH
 3m x 5m
 DATE: XXXXXXXX

SHEET
 WJ-A-03